

# Service Document Exchange Set

## GDP 9550

GMK4600, GMK4601

<b>Service Manual</b>
<b>Sicherheit</b>
<b>Safety</b>
Materialnr./Part No. 720108000001



Es gelten die Vorschriften und Sicherheitshinweise gemäß dem Service Manual "Sicherheit", Materialnummer 720108000001, sowie zusätzlich die eventuell abweichenden, landesspezifischen Vorschriften!



The regulations and safety instructions shall be valid as provided by the "Safety" Service Manual, part number 720108000001, as well as the respective national deviations.

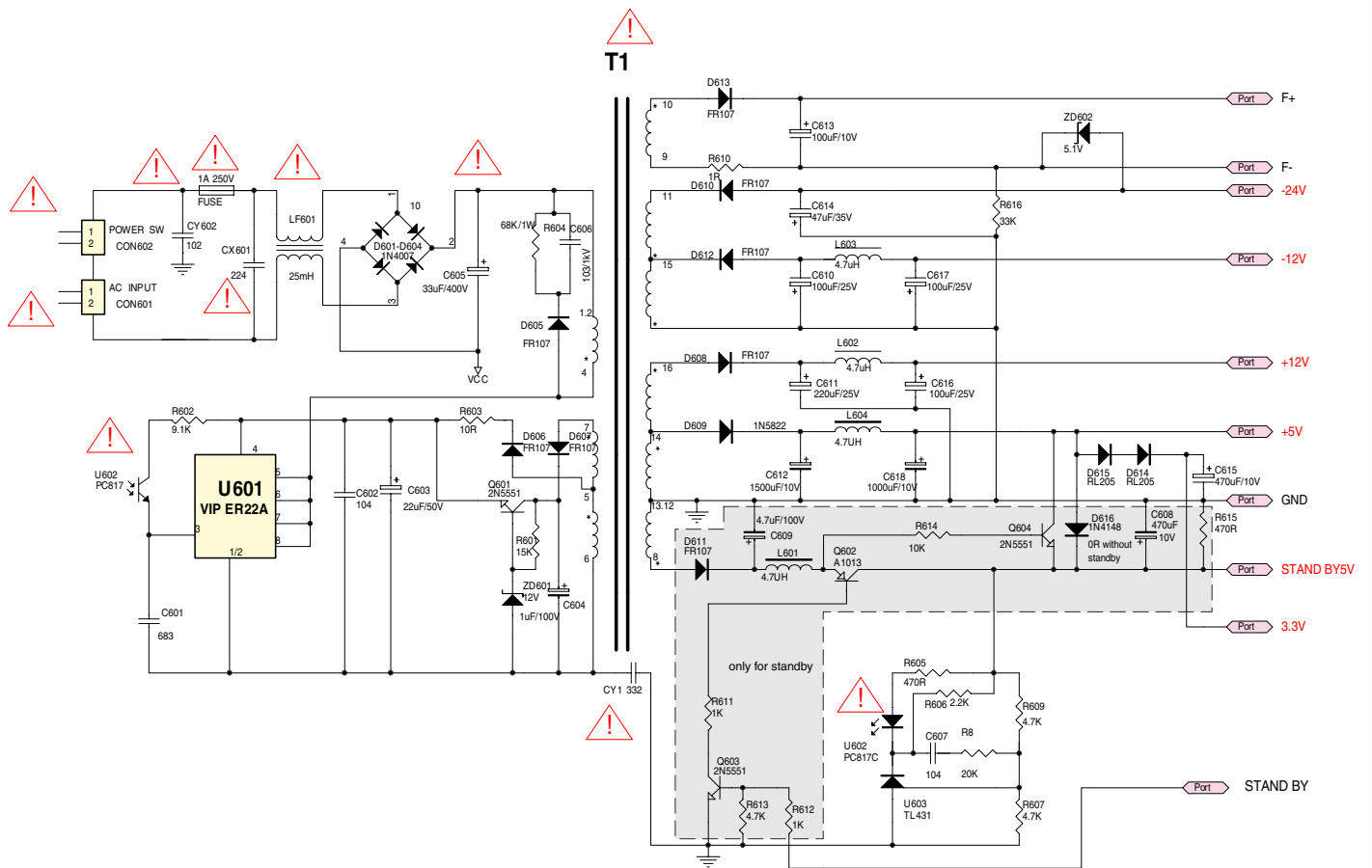
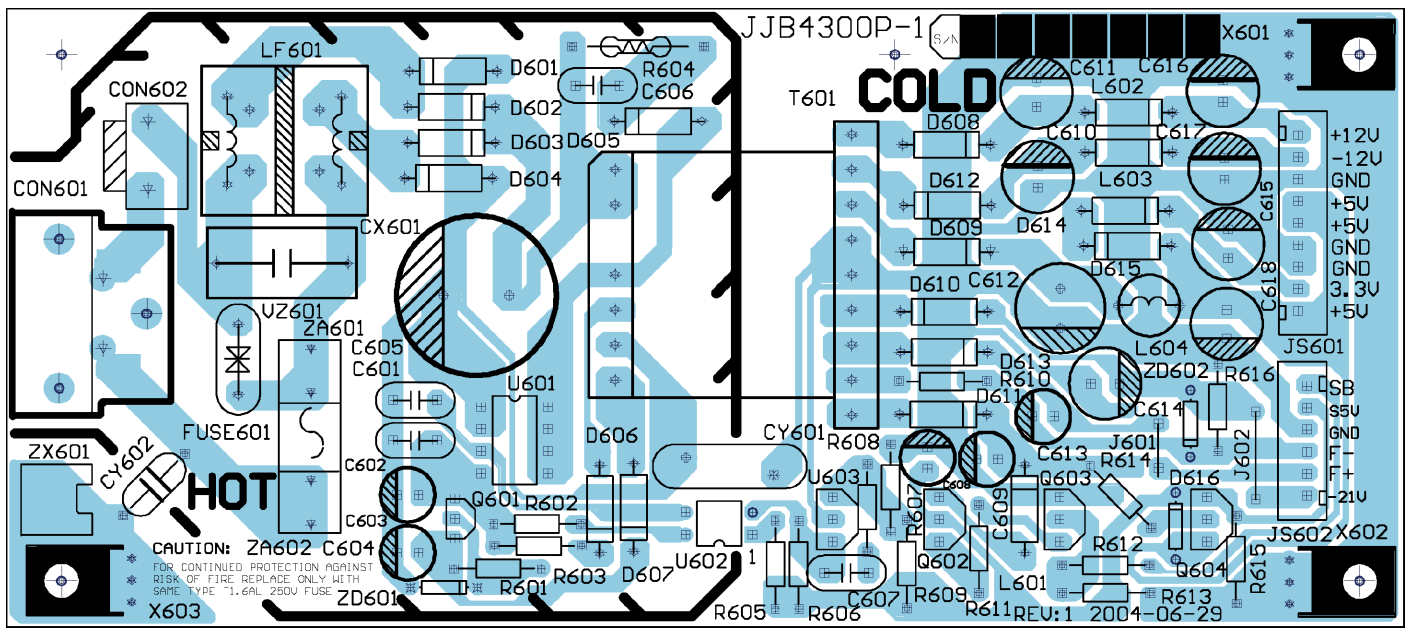
Dieses Service Dokument ist nur in Datenform verfügbar

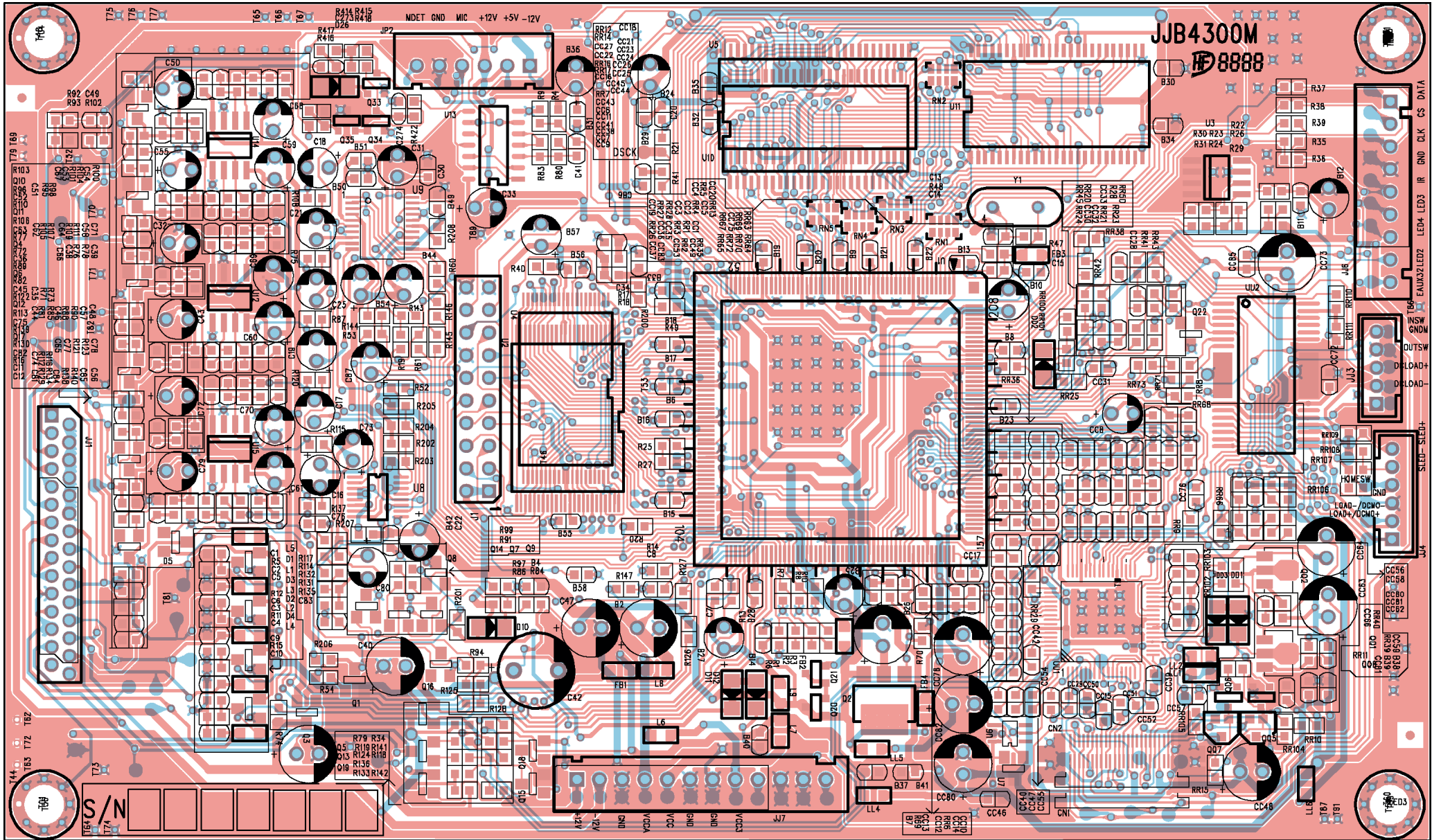
This Service Document is only available as data

Änderungen vorbehalten/Subject to alteration

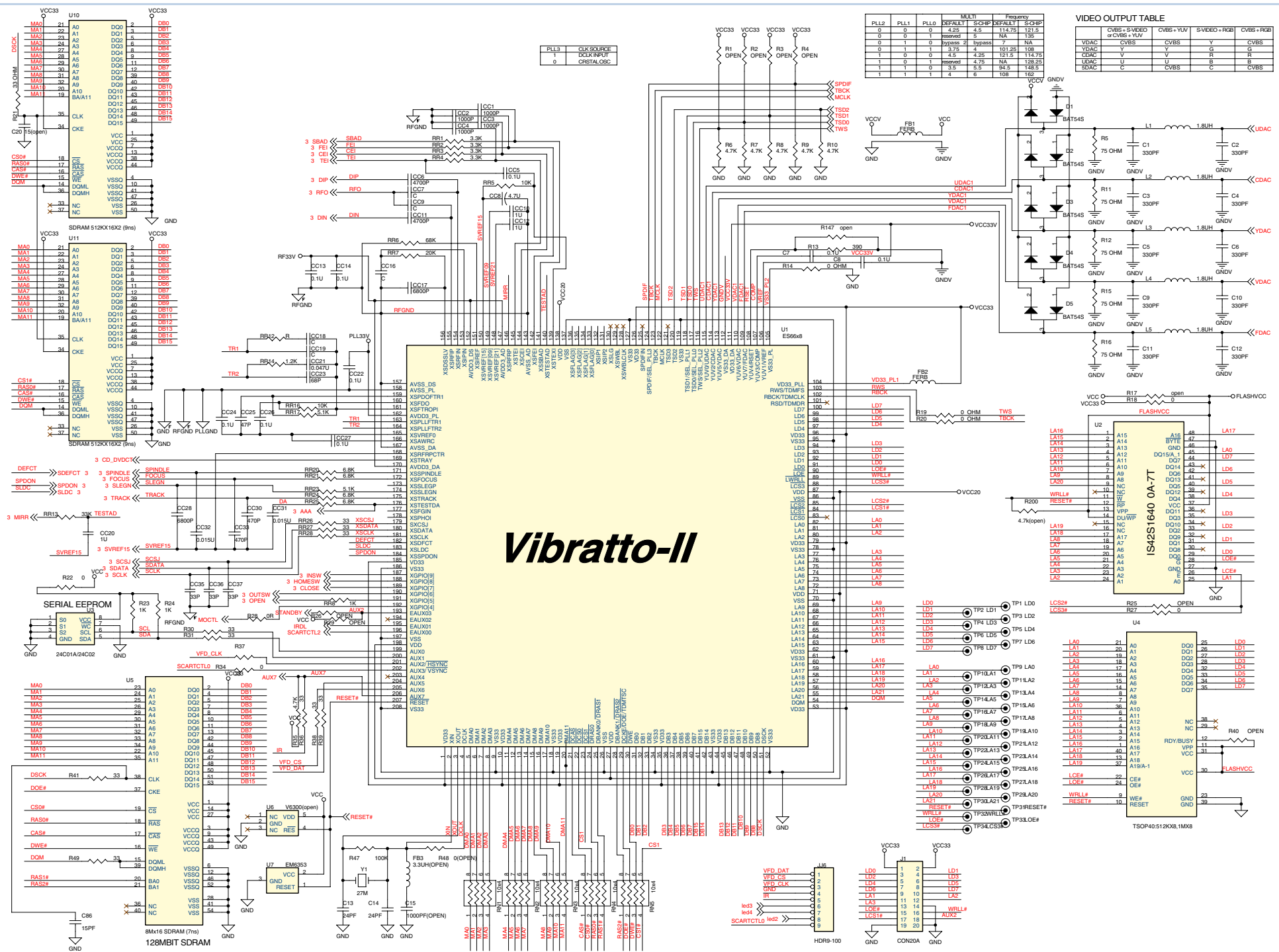
Made by GRUNDIG in Germany • HS-41 1005

<http://www.grundig.com>







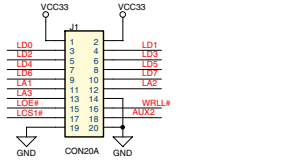
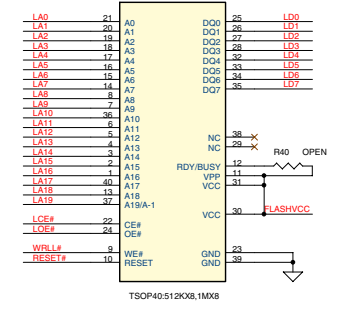
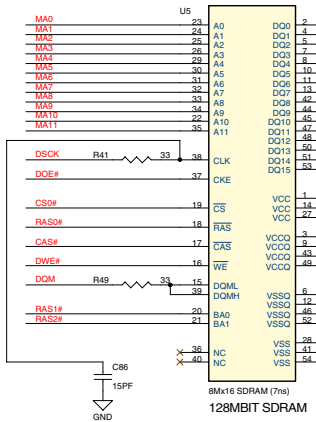


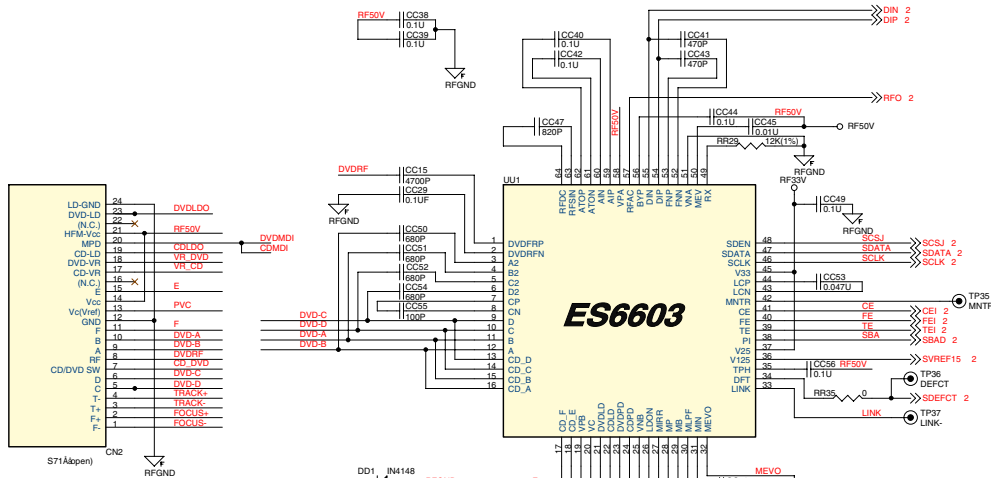
PLL3	CLK SOURCE
1	DCLK INPUT
0	CRYSTAL OSC

PLL2	PLL1	PLL0	DEFAULT	S-CHIP	DEFAULT	S-CHIP	Frequency
0	0	0	2.25	4.5	114.75	121.5	
0	0	1	reserved	3	NA	138	
0	1	0	bypass 2	bypass	7	NA	
1	0	0	3.75	4.25	101.25	108	
1	1	0	3.5	3.5	87.5	148.5	
1	0	1	reserved	4.75	NA	128.25	
1	1	1	4	6	6	162	

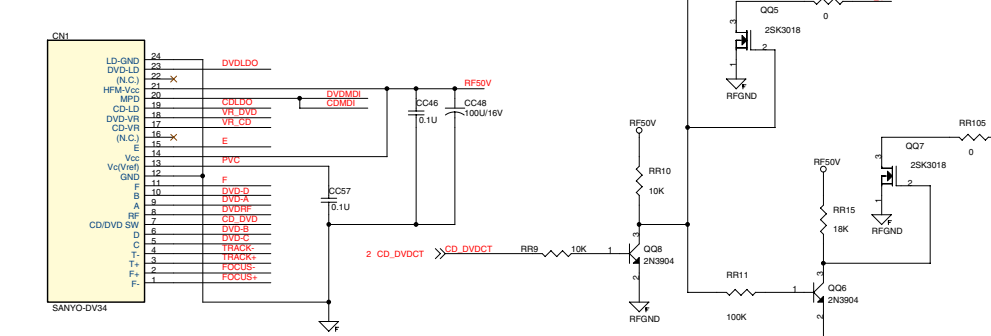
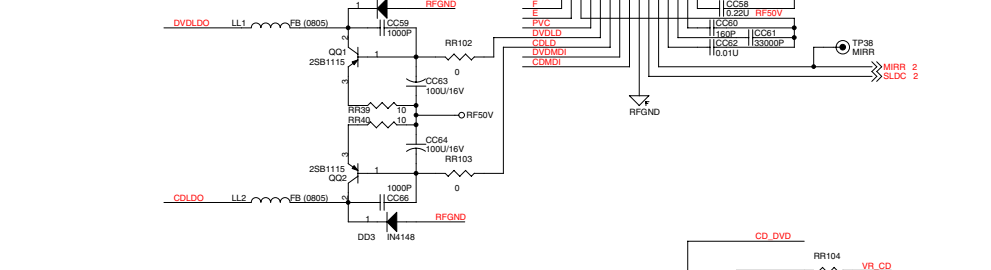
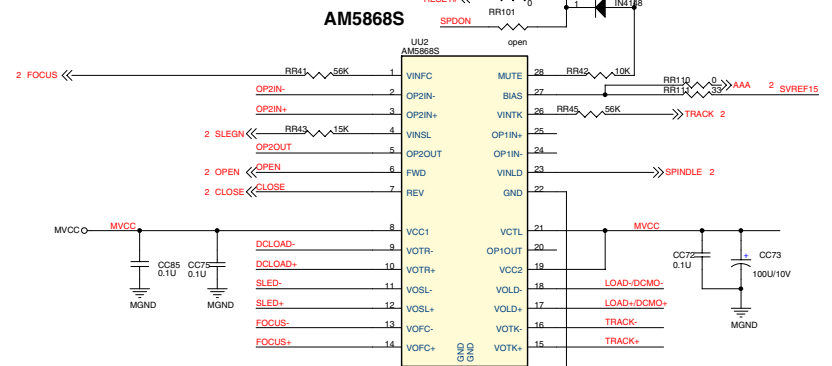
VIDEO OUTPUT TABLE					
CVBS + SVIDEO		CVBS + YUV		SVIDEO + RGB	
UDAC	CVBS	CVBS	Y	U	CVBS
UDAC1	V	V	Y	U	B
UDAC2	V	V	Y	U	B
UDAC3	V	V	Y	U	B
UDAC4	U	U	B	B	B
UDAC5	C	CVBS	C	CVBS	CVBS

# Vibratto-II

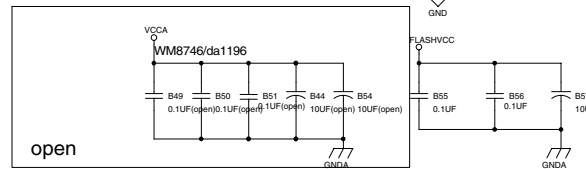
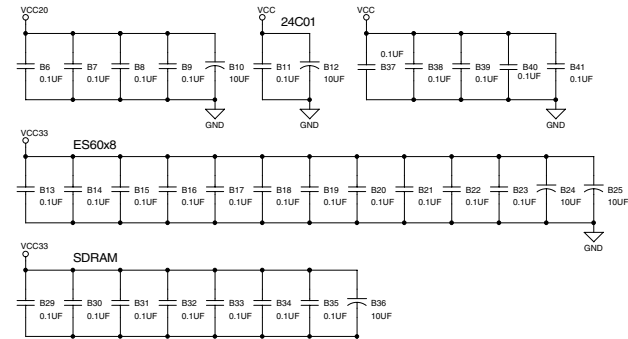
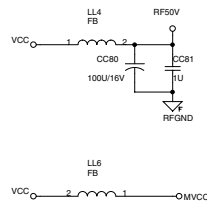
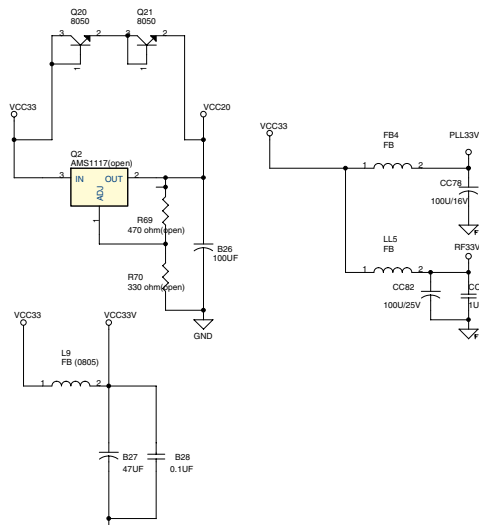
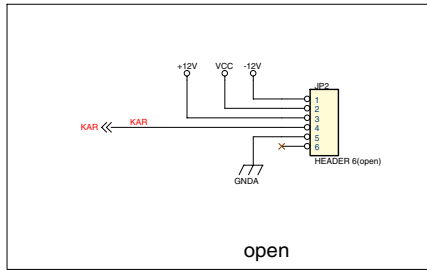
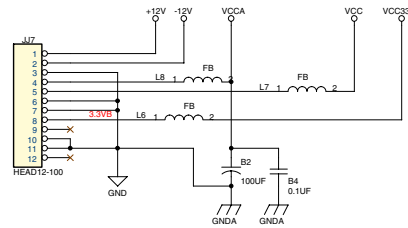
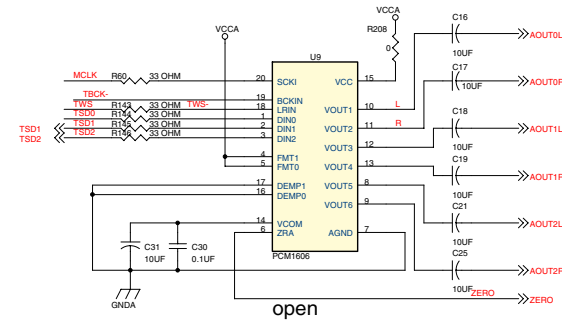
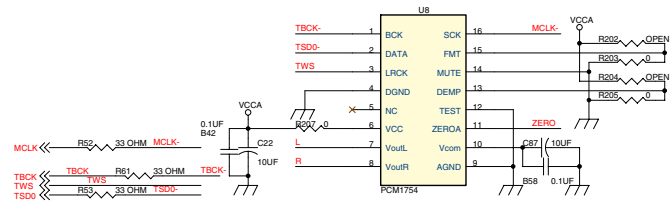


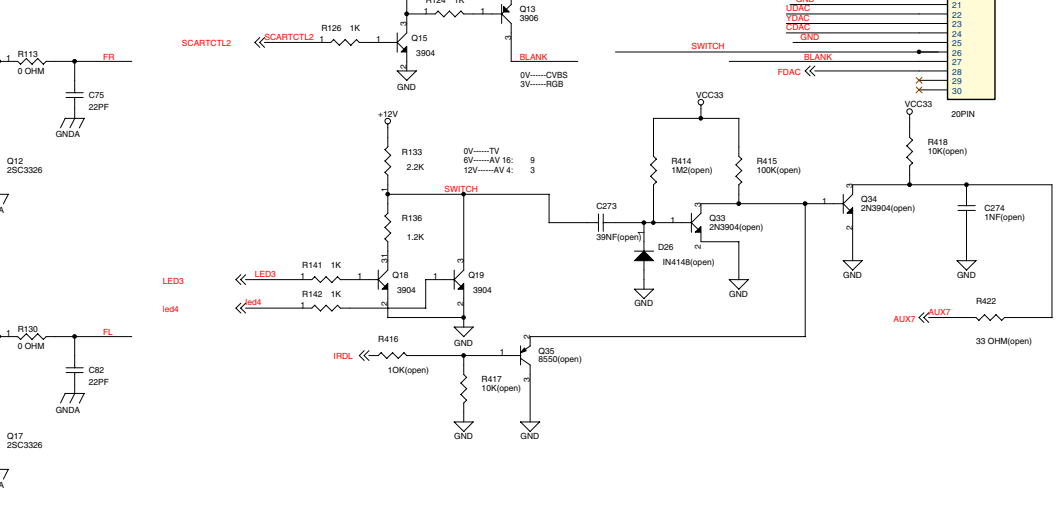
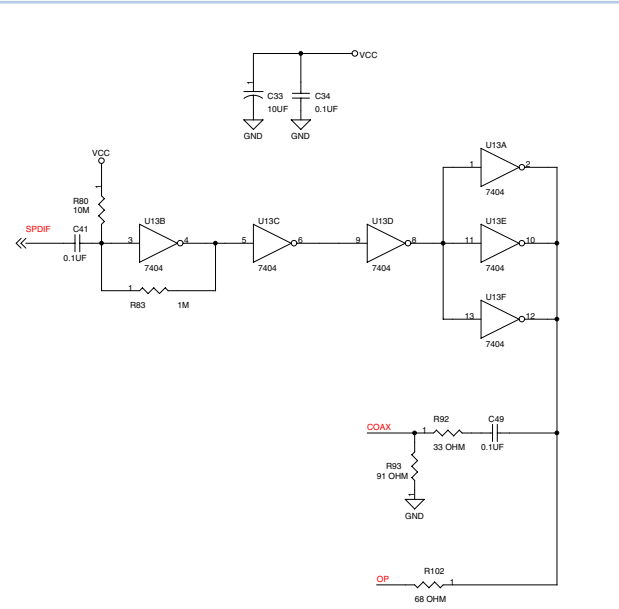
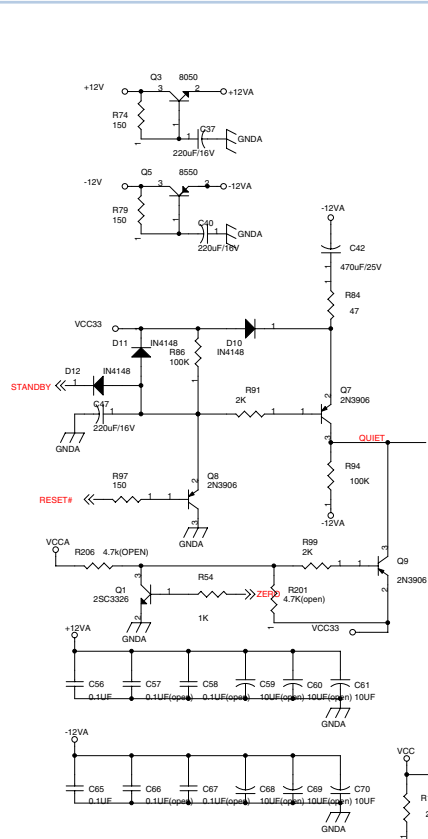
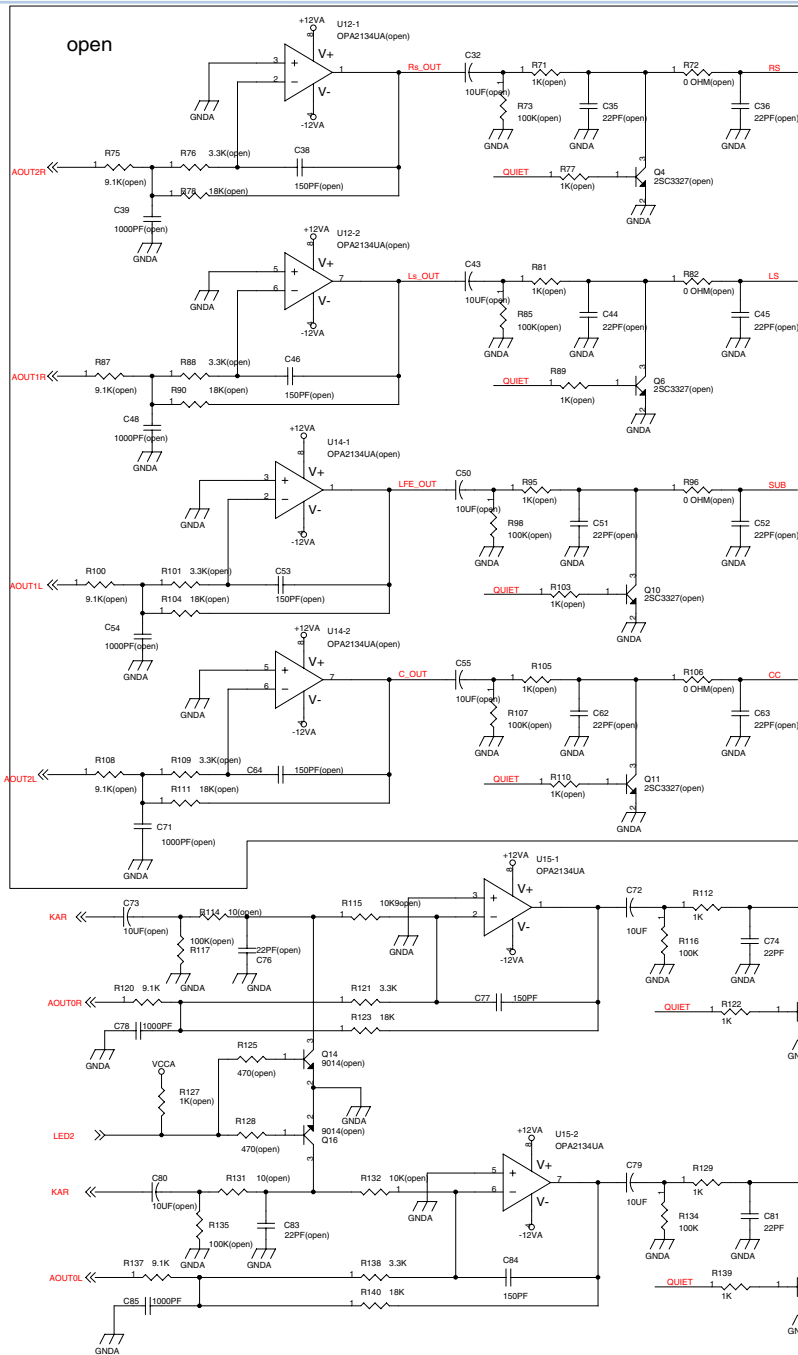


Δ'ΔGΔ'	Iz	SANYO DV34	SAMSUNG S71
RR102,RR103	0	1K	
RR104,RR105	0	10	
CC50,CC51	680PF	2200PF	
CC52,CC54	1K	NC	
RR36	NC	10K	
RR38	10K	22K	
RR42	0	NC	
RR100	0	NC	
RR101	NC	0	
CN1	INSTALL	OPEN	
CN2	OPEN	INSTALL	
RR106,RR108	0	NC	
RR107,RR109	NC	0	
RR110	0	N C	
RR111	NC	33	
RR14,RR45	56K	56K	
RR20,RR21	6.8K	12K	
RR24			
RR23	5.1K	12K	

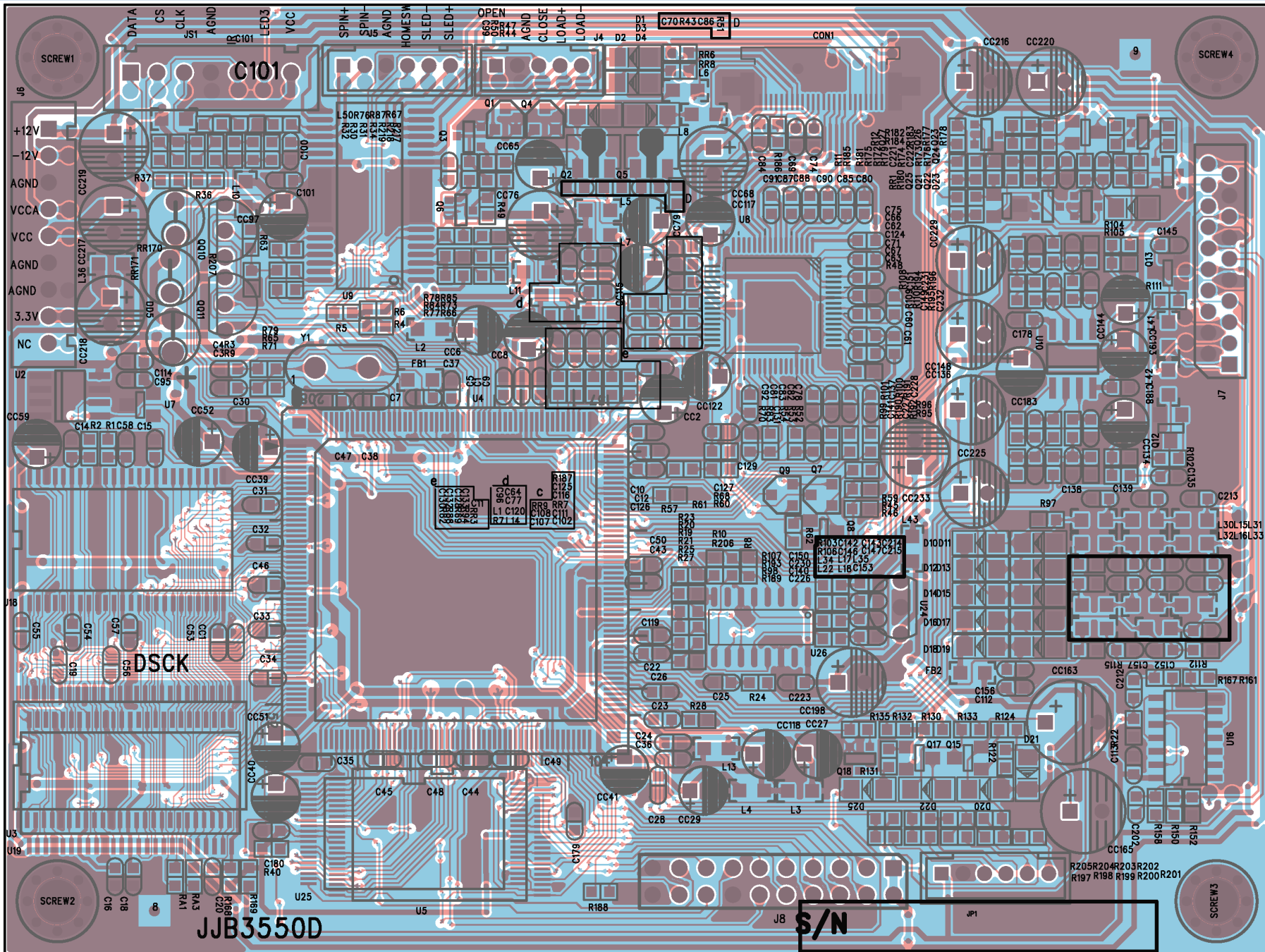


BURR-BROWN 6-CHANNEL AUDIODAC

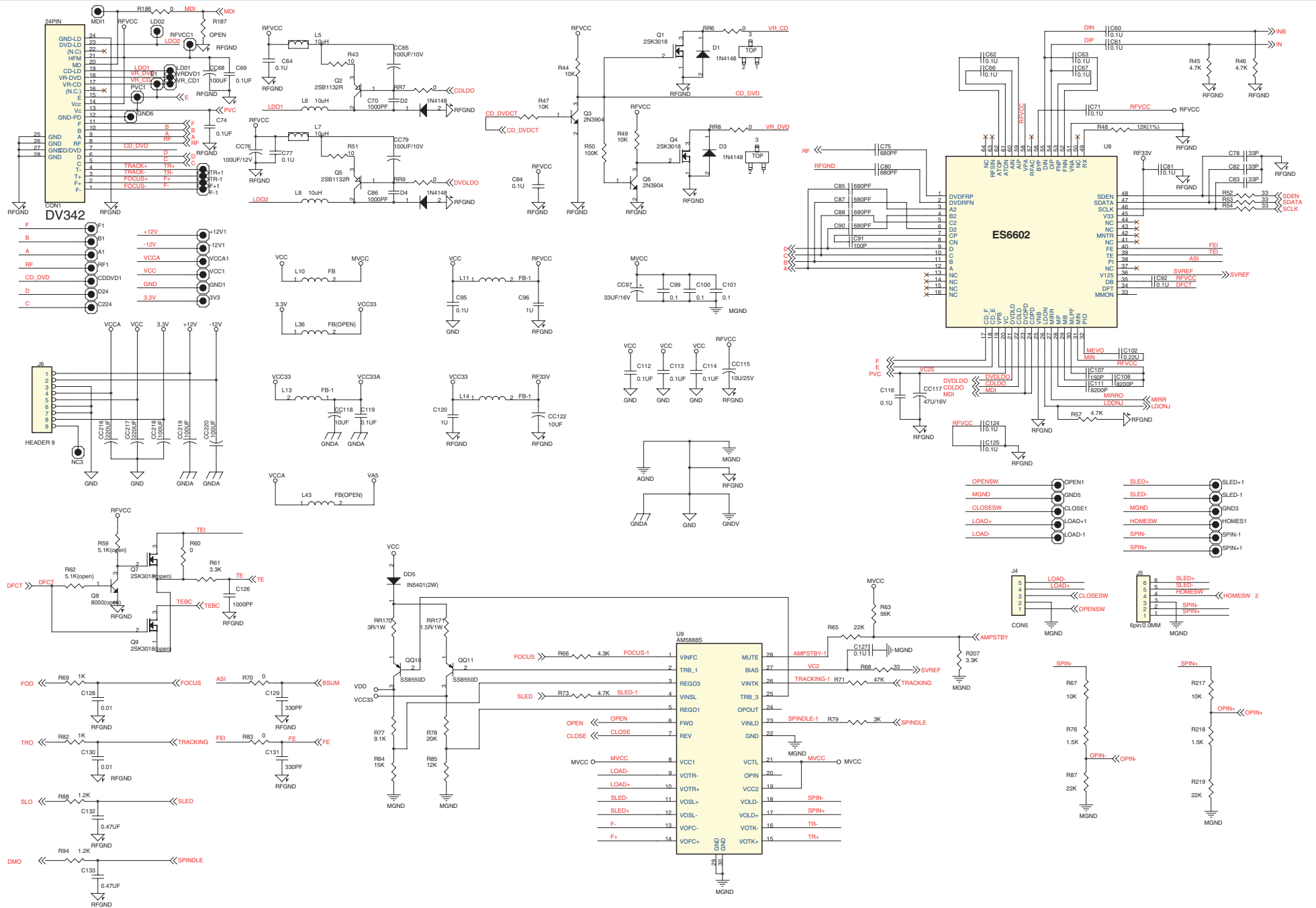


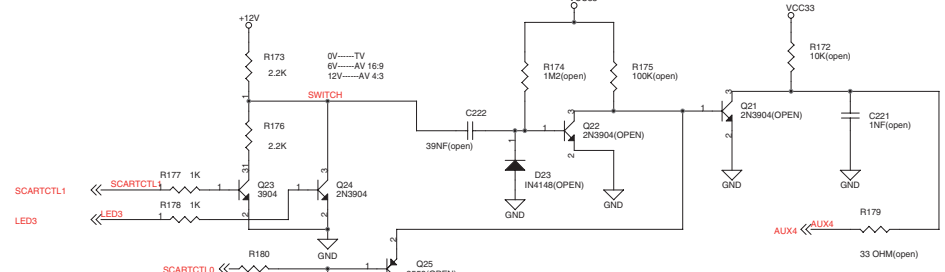
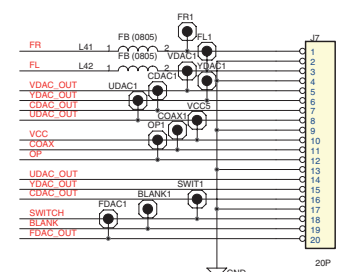
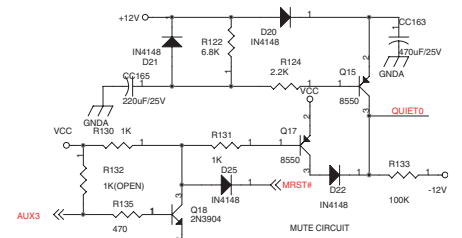
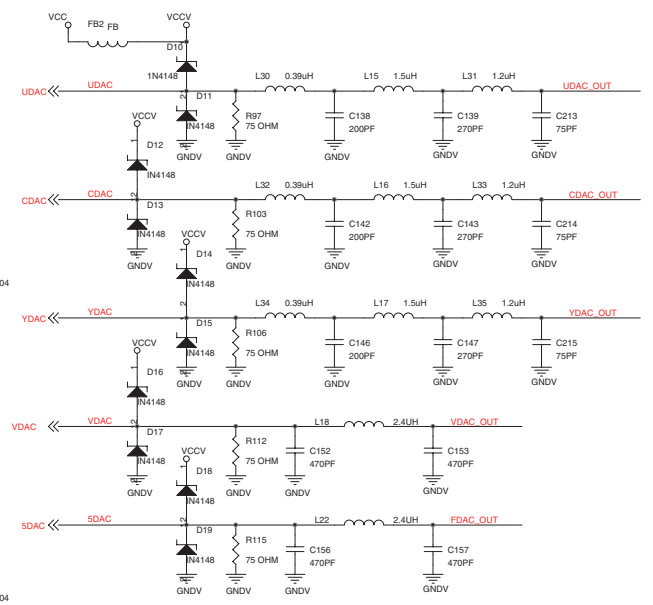
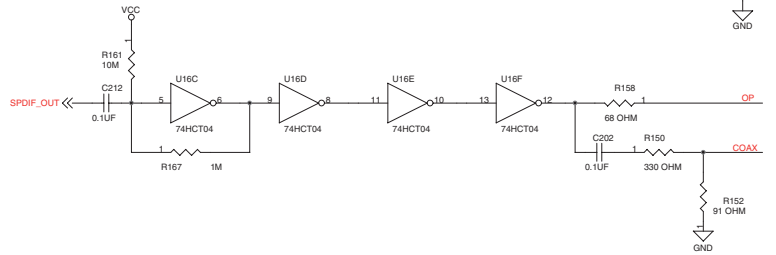
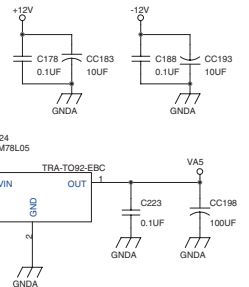
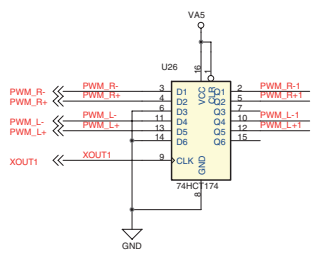
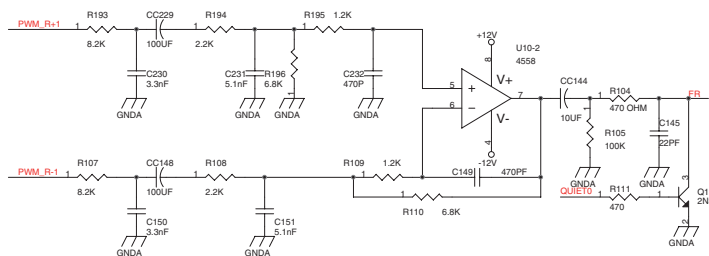
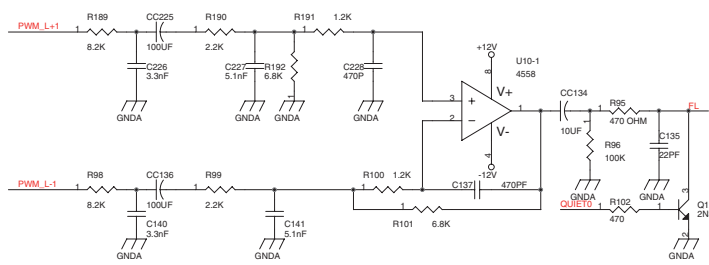




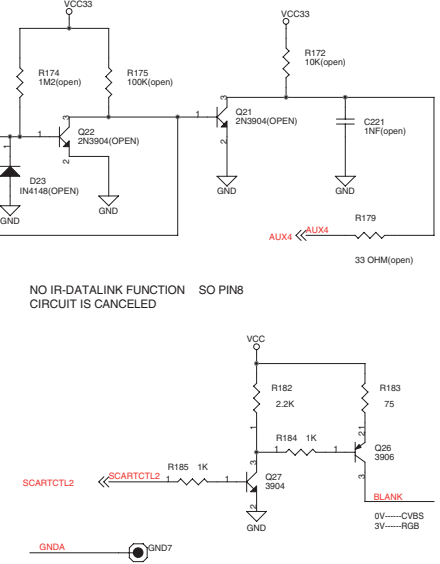


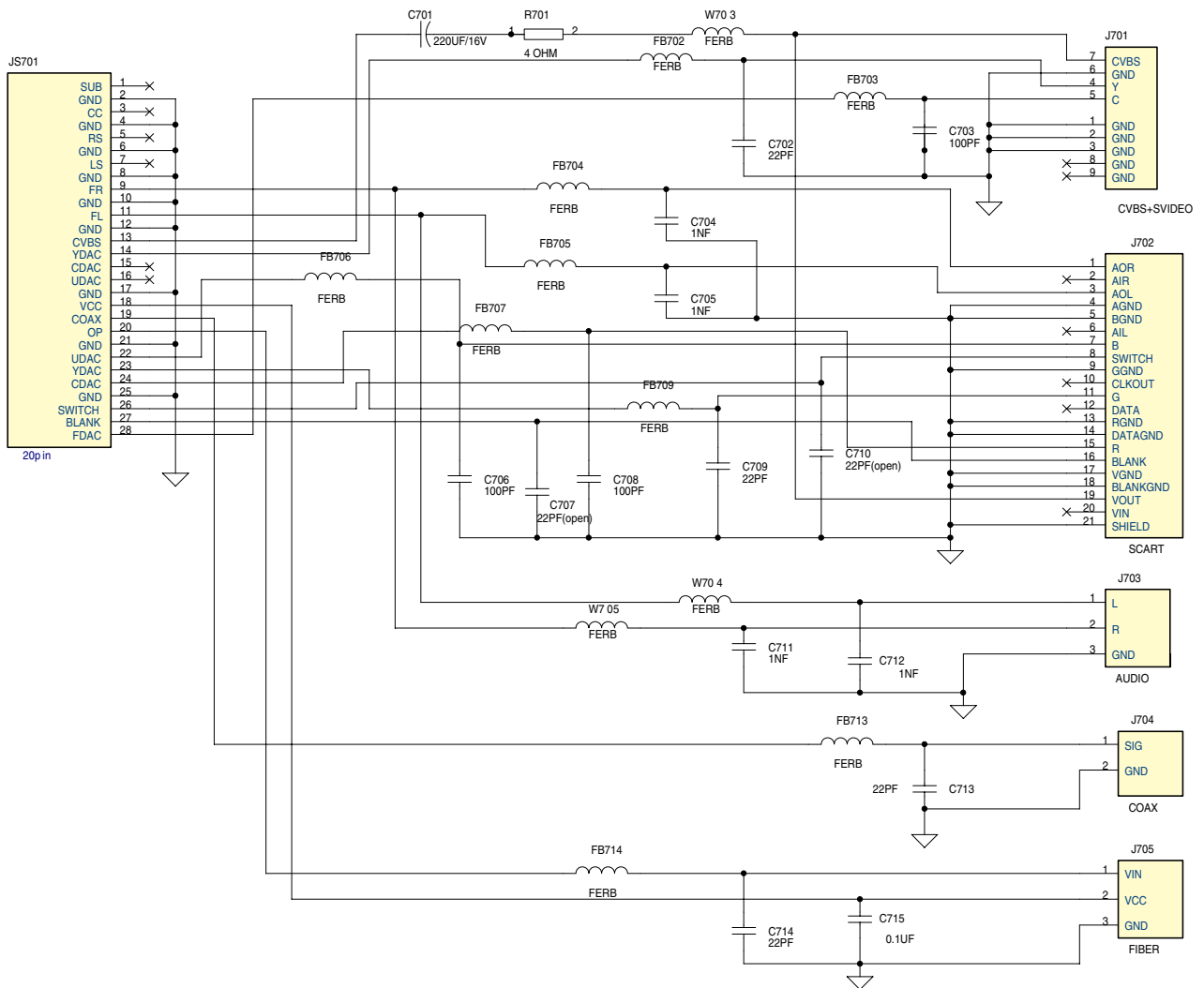
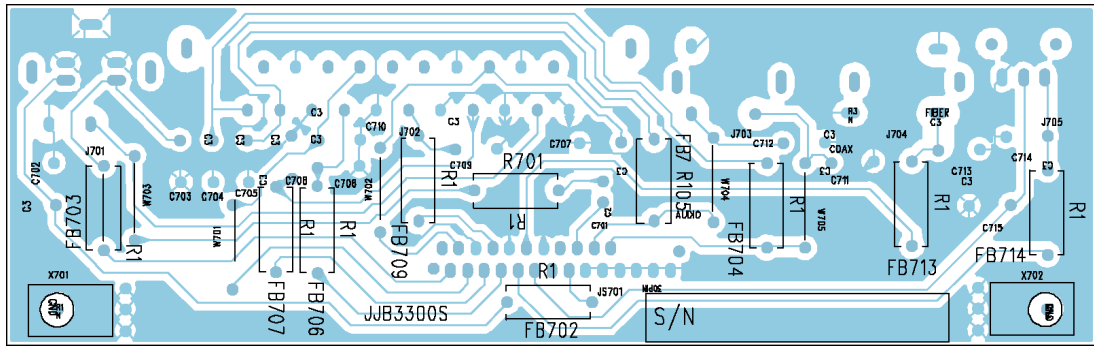


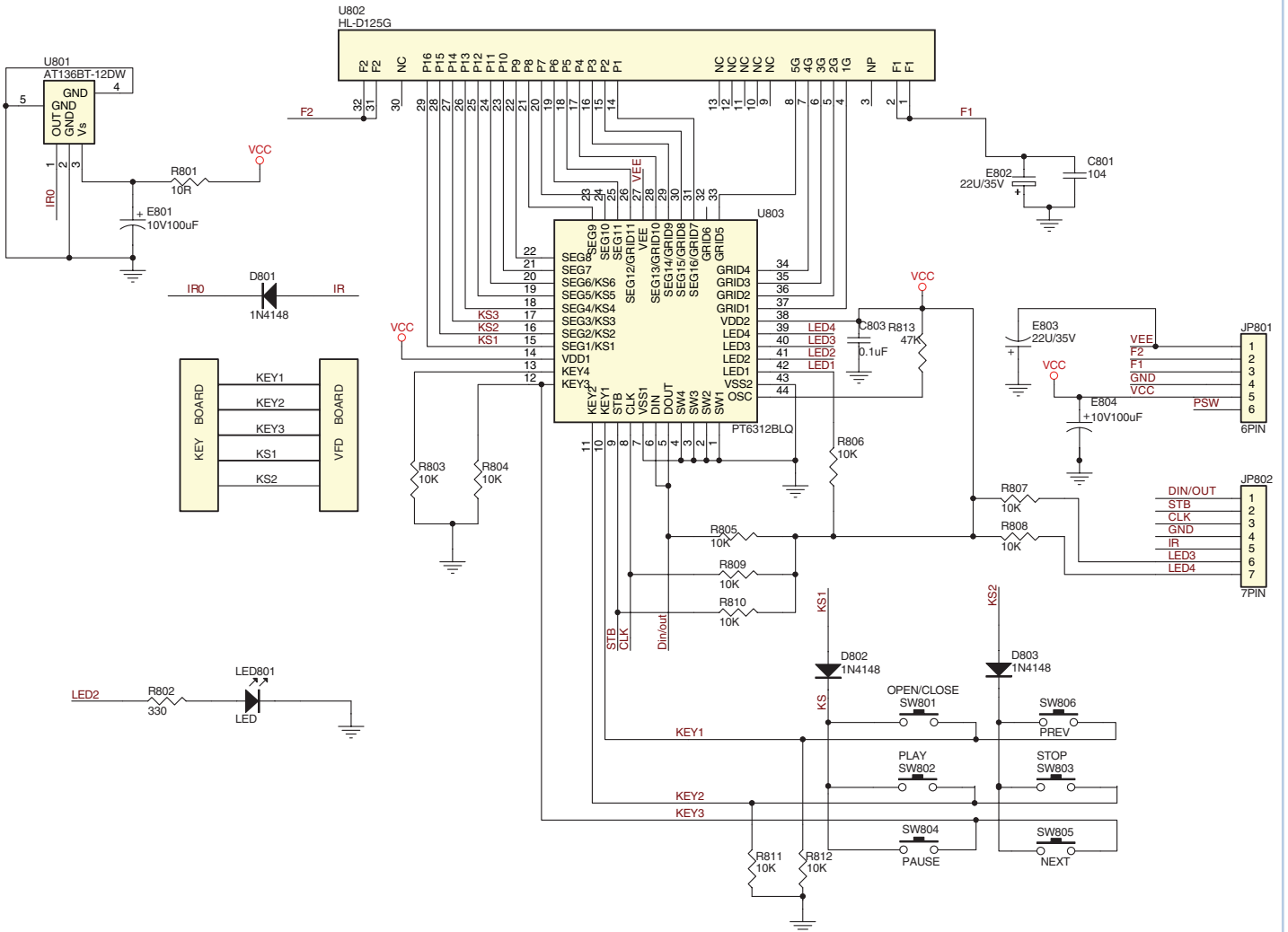
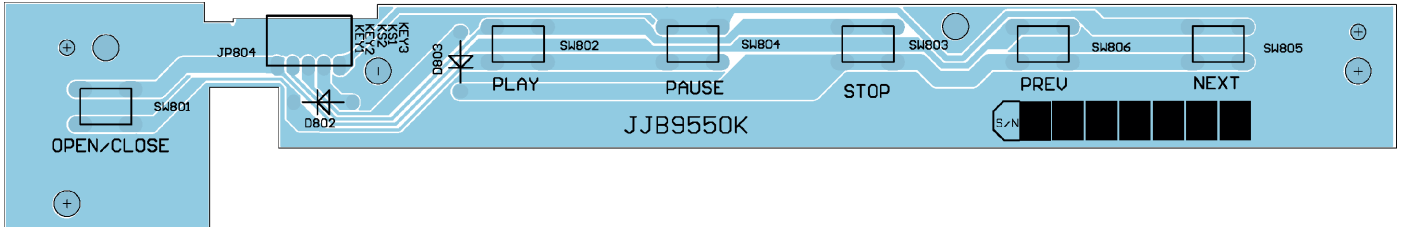
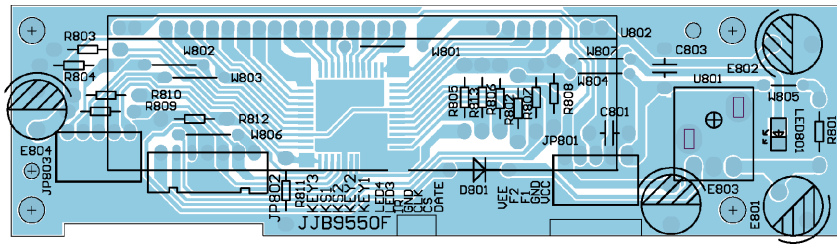




NO IR-DATALINK FUNCTION SO PIN8 CIRCUIT IS CANCELED







## Ersatzteilliste Spare Parts List

## DVD

### 5 / 2005

### GDP 9550

MATERIAL-NR. / PART NO.: 774010895100  
BESTELL-NR. / ORDER NO.: GMK4600

POS. NR. POS. NO.	ABB. FIG.	MATERIAL-NR. PART NUMBER	ANZ. QTY.	BEZEICHNUNG ①	DESCRIPTION ②
		774010895100		GDP 9550 <b>TAUSCHGERAET</b>	GDP 9550 <b>EXCHANGE SET</b>
0001.000		296420660200		TP 81 D FERNBEDIENUNG (GRAU)	TP 81 D REMOTE CONTROL (GREY)
		720110505000		BEDIENUNGSANLEITUNG S	INSTRUCTION MANUAL S
		720116046500		BEDIENUNGSANLEITUNG D/GB	INSTRUCTION MANUAL D/GB

Es gelten die Vorschriften und Sicherheitshinweise gemäß dem Service Manual "Sicherheit", Mat.-Nummer 720108000001, sowie zusätzlich die eventuell abweichenden, landesspezifischen Vorschriften!



The regulations and safety instructions shall be valid as provided by the "Safety" Service Manual, part number 720108000001, as well as the respective national deviations.

ÄNDERUNGEN VORBEHALTEN / SUBJECT TO ALTERATION